

Skrålinje = nedsenket himling

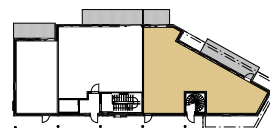
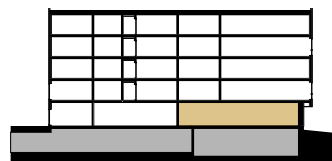
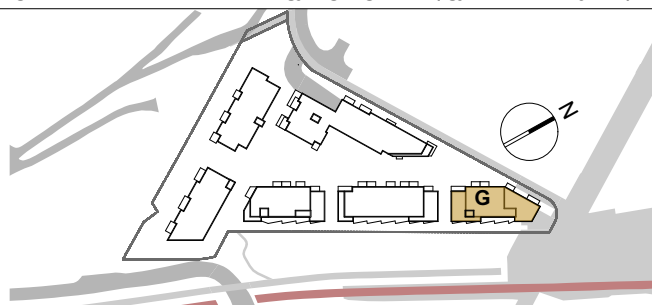


Leilighet:

G0101

Type: G-1 (3-roms med hybel)	BRA-i:	113,0 m2
Bygg: G	BRA-e (sportsbod):	5,0 m2
Etasje: 1	SUM BRA	118,0 m2
	TBA (balkong / terrasse):	22,7 m2

Leilighet tilfredsstillter krav til tilgjengelighet (gjelder ikke hybel)



Tegningsnr.
G A 200 71 001

Dato
2024.02.01